

SPECIFICATION SHEET

Product Name: Cor a 9

Catalog # CA09-A37A

Product Description: Native *Corylus avellana* (Hazelnut) allergen.

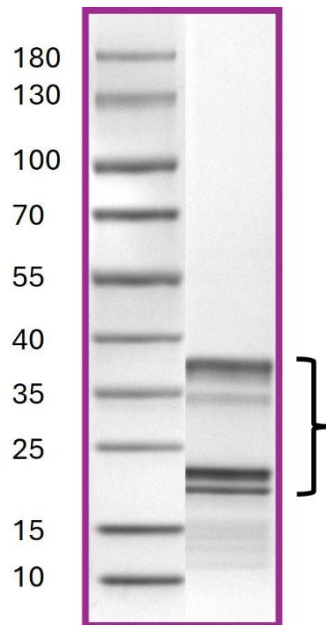
Storage and Stability: Store at -20°C. To avoid repeated handling and multiple freeze/thaw cycles aliquot diluted product into smaller quantities.

Data for a Sample Lot:

Alternate Names : 11S seed storage globulin (legumin-like)
Source : *Corylus avellana* (Hazelnut)
Accession Numbers : Genbank: [AF449424](https://www.ncbi.nlm.nih.gov/nuclot/AF449424)
Host : Native protein
Formulation : Native protein stored in 30mM Tris-Cl, pH8.0 solution
Molecular weight : Multiple subunits, ~24 - 35 kDa

Purity : The purity was determined to be ≥90% by densitometry

Gel Image



References

1. Giannetti A., et al. Natural History of Hazelnut Allergy and Current Approach to Its Diagnosis and Treatment. *Children* 2023, 10, 585.
2. Guo F., et al. Purification and crystallization of Cor a 9, a major hazelnut allergen. *Acta Cryst.* (2009). F65, 42-46.